

How GCS was run 2022-23

A. Management Committee – Chair and board

B. Centre Coordinator – The Coordinator (Gina Patelis) is responsible for running the centre and reporting to the chair and board regularly.

C. Financial Officer – The financial officer (Diana Jukes) controls all report to finances and reports to the Coordinator and Chair/board.

Service delivery of GCS

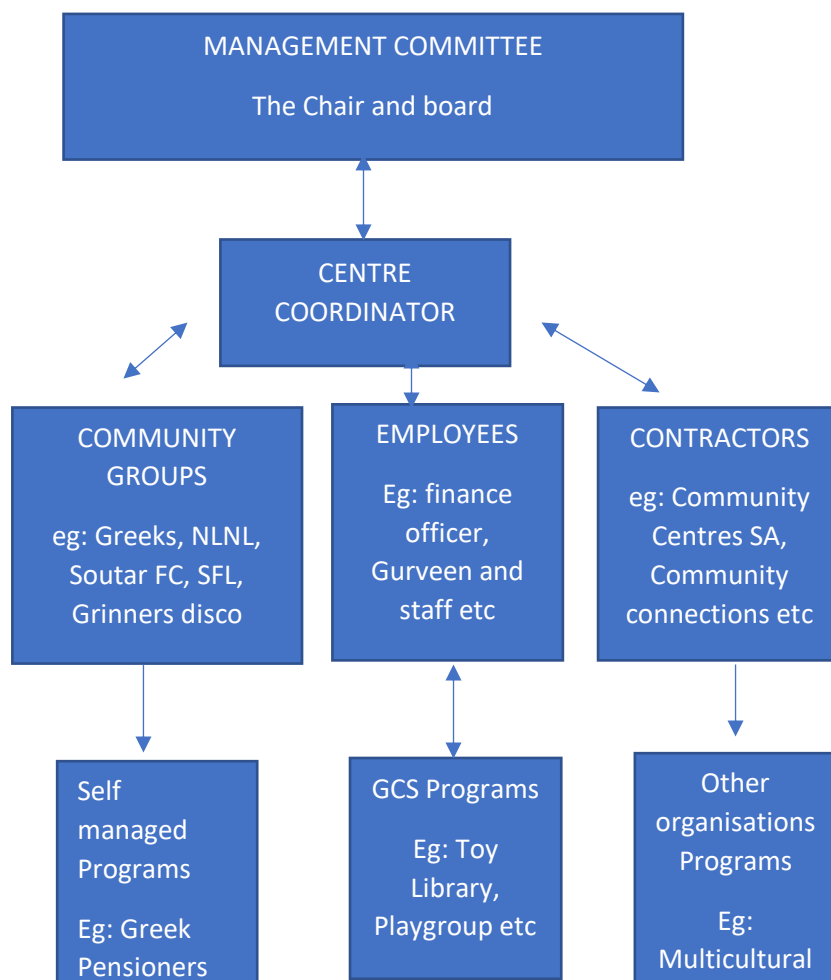
Direct Employees - Gina Patelis

Diana Jukes

Gurveen Kaur

- Sasi Ilangovan
- Ruby Home
- Alison Currie
- Li-fang
- Lizzie Bradley

Contracts – Community Centres SA
Connecting Communities
Baptist SA
The Goody Road Traders Association
City of Unley
The Department for Education
Department of Human Services



Who used GCS 2022-23

Snap Shot:CURRENT REGULAR HALL HIRERS (10/8/22)

- | | |
|---|---|
| 1. Art By Eksha (after school) | 24. P.A.C.H (professional associations of classical homeopaths) |
| 2. Australian Convivial Background civilisation | 25. Sam Morris (guitar lessons) |
| 3. Australian World Taekwondo/Oriental Sports | 26. Sumbaloz |
| 4. Art Playgroup | 27. Ready Steady Go Kids |
| 5. Bears and Friends | 28. Sitting Volleyball |
| 6. Birthing Kit Foundation | 29. SA Bonsai Society |
| 7. Creative Buds (pre-schoolers) | 30. Skate school |
| 8. Cactus and Succulent Society of SA Inc. | 31. Theatre Organ Society of Aust Inc. |
| 9. Chrysanthemum Society | 32. Venton Cook Taiichi |
| 10. City of Unley – Library baby time | 33. Victory International |
| 11. Ezy dance | 34. Veteran and Vintage Motorcycle Club of SA |
| 12. Greek Pension and Aged Society of SA | 35. Tummy time Pilates |
| 13. Goodwood Community Bank | 36. Rural and remote mental health |
| 14. GOSPO Pty Ltd | 37. Peniel Laymen’s Ministry |
| 15. Greek Women’s Society of SA Inc. | 38. Lizzie Foley |
| 16. Goodwood Volleyball Association | 39. Renew |
| 17. Hillside Paediatrics | 40. Phoenix counselling psychotherapy services |
| 18. Hittman Group and personal training | 41 Falun Dafa |
| 19. Let’s talk together -Russian volleyball | 42. Grinners Disco |
| 20. Kids Music and moves | 43. Soutar FC |
| 21. Marisa Peluso – Italian group | 44. No lights No Lycra |
| 22. Pedaltek Fitness | 45. Strength for life |
| 23. Oriental Martial Arts Academy | 46. Passare Tempo |

How GCS funds itself.

The financial model for GCS is simple and effective.

1. The services existent at the centre pay an affordable fee for their use for the facilities.
2. Certain mandated services required by Council have their fee set to meet that mandate.
3. The balance of the funds come from hiring out the halls to produce an income that meets the cost of wages and administration.
4. Additionally, grants are received that provide for extra scope. GCS is a true not-for-profit body. It does not make a profit; it provides for its community.

Almost 70% of the income to run GCS is from hall hire of the Goodwood Community Centre Halls.